

State of Rhode Island and Providence Plantations

Budget



Fiscal Year 2013

Volume IV – Public Safety, Natural Resources
and Transportation

Lincoln D. Chafee, Governor

Agency

Office Of Public Defender

Agency Mission

To provide high quality representation to all indigents in criminal, juvenile and parental rights litigation, fulfilling the governmental obligation to provide effective assistance of counsel and to secure fundamental fairness and due process to the indigent citizens of Rhode Island.

Agency Description

The Office of the Public Defender is statutorily mandated to represent indigent adults and juveniles who are charged with criminal offenses or who are in jeopardy of losing custody of their children to the State. Referrals come from the Supreme, Superior, District, and Family Courts. All who are financially eligible are assigned to a staff attorney for representation in the appropriate court.

The office carries out a single program: representation of indigents. Within this program are activities associated with adult and juvenile criminal matters, and with termination of parental rights and dependency and neglect petitions filed by the DCYF. The office offers appellate representation in the Rhode Island Supreme Court in those areas in which it offers trial level representation. Assisting the attorneys who deliver the primary service of the office is a support staff of social workers, investigators, interpreters, information technology staff, intake staff and clericals.

The Public Defender is appointed by the Governor with the advice and consent of the Senate for a six-year term.

Statutory History

The Office of the Public Defender was created in 1941 by Chapter 1007 of the Rhode Island Public Laws. It was one of the earliest, and perhaps even the first, statewide Public Defender agencies in the Nation. Title 12, Chapter 15 of the Rhode Island General Laws defines the organization and functions of the agency, and mandates it to represent those who are without financial resources to retain private counsel. Title 14, Chapter 1 describes the referral process by the Family Court, and Title 40, Chapter 11 authorizes referral of dependency, neglect and termination of parental rights cases to the office by the Family Court.

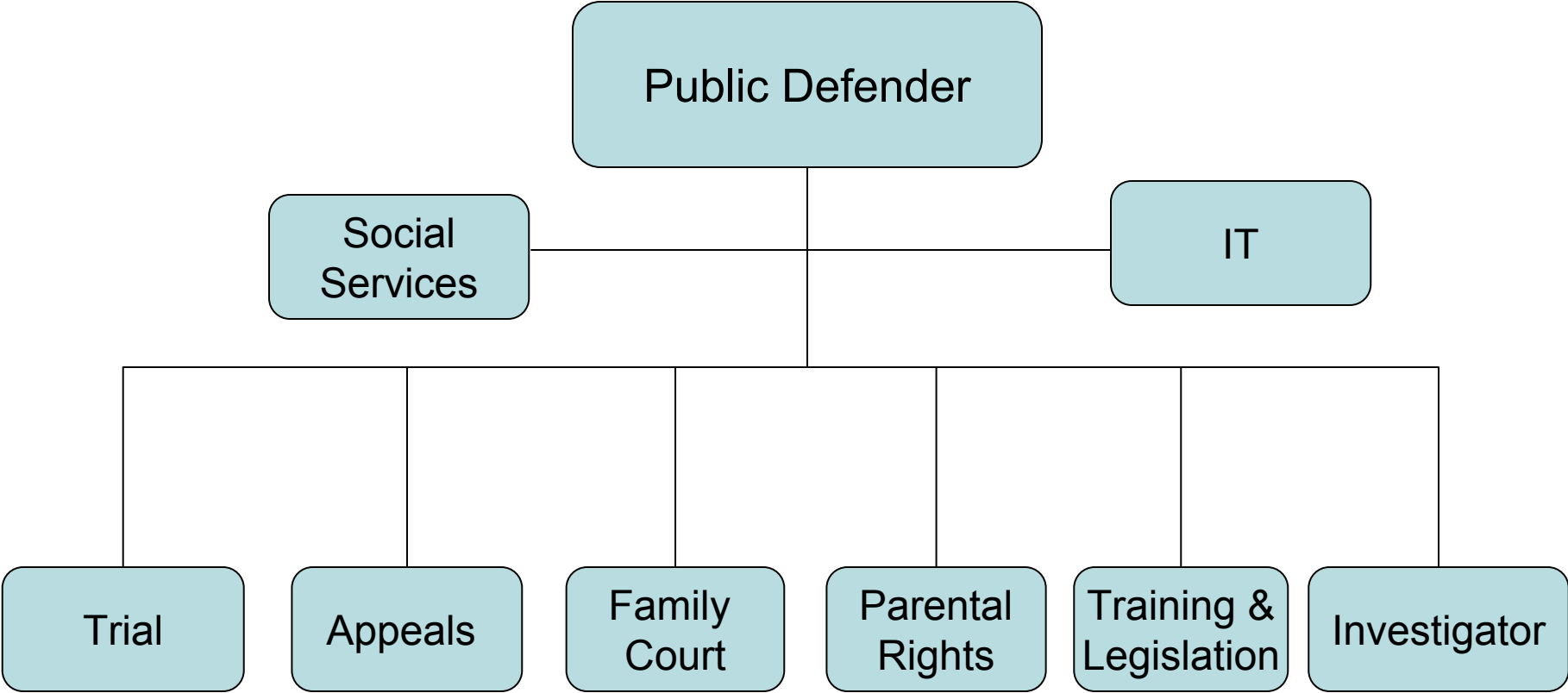
Budget

Office Of Public Defender

	FY 2010 Audited	FY 2011 Audited	FY 2012 Enacted	FY 2012 Revised	FY 2013 Recommend
Expenditures By Program					
Central Management	9,124,681	9,990,894	10,876,941	10,845,885	11,118,311
Total Expenditures	\$9,124,681	\$9,990,894	\$10,876,941	\$10,845,885	\$11,118,311
Expenditures By Object					
Personnel	8,320,498	9,074,432	9,897,502	9,828,493	9,997,557
Operating Supplies and Expenses	740,041	807,184	845,709	873,797	969,991
Assistance and Grants	-	77,980	100,000	101,596	101,596
Subtotal: Operating Expenditures	9,060,539	9,959,596	10,843,211	10,803,886	11,069,144
Capital Purchases and Equipment	64,142	31,298	33,730	41,999	49,167
Total Expenditures	\$9,124,681	\$9,990,894	\$10,876,941	\$10,845,885	\$11,118,311
Expenditures By Funds					
General Revenue	9,013,466	9,493,812	10,300,580	10,358,214	10,679,011
Federal Funds	111,215	497,082	576,361	487,671	439,300
Total Expenditures	\$9,124,681	\$9,990,894	\$10,876,941	\$10,845,885	\$11,118,311
FTE Authorization	92.0	93.0	93.0	91.0	92.0
Agency Measures					
Minorities as a Percentage of the Workforce	12.7%	13.3%	18.7%	18.7%	20.0%
Females as a Percentage of the Workforce	63.8%	64.4%	65.9%	65.9%	65.9%
Persons with Disabilities as a Percentage of the Workforce	9.5%	9.5%	1.1%	1.1%	1.1%
CLE Participation as Proxy Indicator	91.49%	78.72%	80.0%	80.0%	80.0%

The Agency

Rhode Island Public Defender



Personnel

Office Of Public Defender Central Management

	Grade	FY 2012		FY 2013		
		FTE	Cost	FTE	Cost	
Unclassified						
Public Defender	845	1.0	148,942	1.0	148,942	
Deputy Public Defender	843	1.0	138,165	1.0	138,165	
Chief /Appeals Division	840	1.0	121,983	1.0	121,983	
Chief/Trial Division	840	1.0	121,983	1.0	121,983	
Trainers/Assistant Public Defender	839	2.0	227,798	2.0	233,187	
Assistant Public Defender	837	1.0	105,814	1.0	103,609	
Assistant Public Defender I	836	6.0	596,663	(1) 6.0	596,663	
Director of Public Information	839	1.0	89,042	1.0	94,052	
Assistant Public Defender II	834	7.0	622,584	7.0	612,639	
Executive Assistant	833	1.0	84,379	1.0	84,379	
Assistant Public Defender III	832	5.0	388,324	5.0	384,471	
Chief Investigator	828	1.0	72,821	1.0	72,821	
Staff Attorney II	830	13.0	924,192	14.0	995,254	(4)
Fiscal Management/Administrative Officer	829	1.0	69,180	1.0	69,180	
Deputy Chief Investigator	5426	1.0	68,957	1.0	68,957	
Social Casework Supervisor	826	1.0	60,303	1.0	61,484	
Assistant Public Defender IV	828	9.0	535,843	(1) 9.0	554,064	
System Analyst	5424	1.0	58,574	1.0	61,090	
Investigator I	5423	2.0	113,264	2.0	115,510	
Case Management Coordinator	5019	5.0	278,012	5.0	279,441	
Social Service Caseworker	5021	5.0	267,709	5.0	273,196	
Interpreter (Deputy Clerk/Interpreter)	5420	2.0	97,051	2.0	97,051	
Investigator II	5421	3.0	145,071	3.0	150,519	
Intake Coordinator/Supervising Clerk	5418	1.0	46,218	1.0	46,218	
Administrative Secretary	5417	4.0	179,172	4.0	174,140	
Legal Secretary I	5415	4.0	162,848	4.0	166,228	
Confidential Secretary	817	1.0	40,314	1.0	41,783	
Community Outreach Liaison	5418	1.0	39,902	1.0	40,824	
Intake Technician	5413	4.0	149,068	4.0	150,520	
Legal Secretary II	5413	4.0	147,517	4.0	149,226	
Data Entry Aide	5410	1.0	31,562	1.0	32,143	
	Subtotal		91.0	\$6,133,255	92.0	\$6,239,722
Turnover		-	(82,724)	-	(79,465)	
	Subtotal		-	(\$82,724)	-	(\$79,465)
	Total Salaries		91.0	\$6,050,531	92.0	\$6,160,257
Benefits						
Defined Contribution Plan		-	-	-	60,892	
FICA		-	458,704	-	471,260	
Medical		-	952,607	(3) -	1,033,917	(3)
Payroll Accrual		-	-	-	37,199	
Retiree Health		-	414,944	-	422,594	
Retirement		-	1,428,615	(2) -	1,343,575	(2)
	Subtotal		-	\$3,254,870	-	\$3,369,437

Personnel

Office Of Public Defender Central Management

	Grade	FY 2012		FY 2013	
		FTE	Cost	FTE	Cost
Total Salaries and Benefits		91.0	\$9,305,401	92.0	\$9,529,694
Cost Per FTE Position			\$102,257		\$103,584
Statewide Benefit Assessment		-	241,672	-	231,009
Subtotal		-	\$241,672	-	\$231,009
Payroll Costs		91.0	\$9,547,073	92.0	\$9,760,703
Purchased Services					
Building and Grounds Maintenance		-	432	-	432
Clerical and Temporary Services		-	177,000	-	173,000
Information Technology		-	52,920	-	16,920
Legal Services		-	29,069	-	25,000
Other Contract Services		-	22,000	-	21,500
Subtotal		-	\$281,421	-	\$236,852
Total Personnel		91.0	\$9,828,494	92.0	\$9,997,555
Distribution By Source Of Funds					
General Revenue		89.0	9,458,014	90.0	9,681,397
Federal Funds		2.0	370,479	2.0	316,160
Total All Funds		91.0	\$9,828,493	92.0	\$9,997,557

1 Loss of federal funds results in loss of 2.0 FTE's:
Caseload Reduction/Tri County attorney (misdemeanor),
and Drug Court attorney.

3 13 employees currently waive medical benefits.

2 Includes LIUNA pension costs at \$1,032 per union
employee.

4 Misdemeanor attorney in Third District Court (Kent
County).

Office Of Public Defender Performance Measure Narratives

Central Management

CLE Participation as Proxy Indicator

We measure the percentage of legal staff who meet the total mandatory CLE requirement through continuing education courses sponsored by the agency: the goal is 80%. We predicted that in FY 2011, 80% of the attorney staff would have met at least 80% of t
